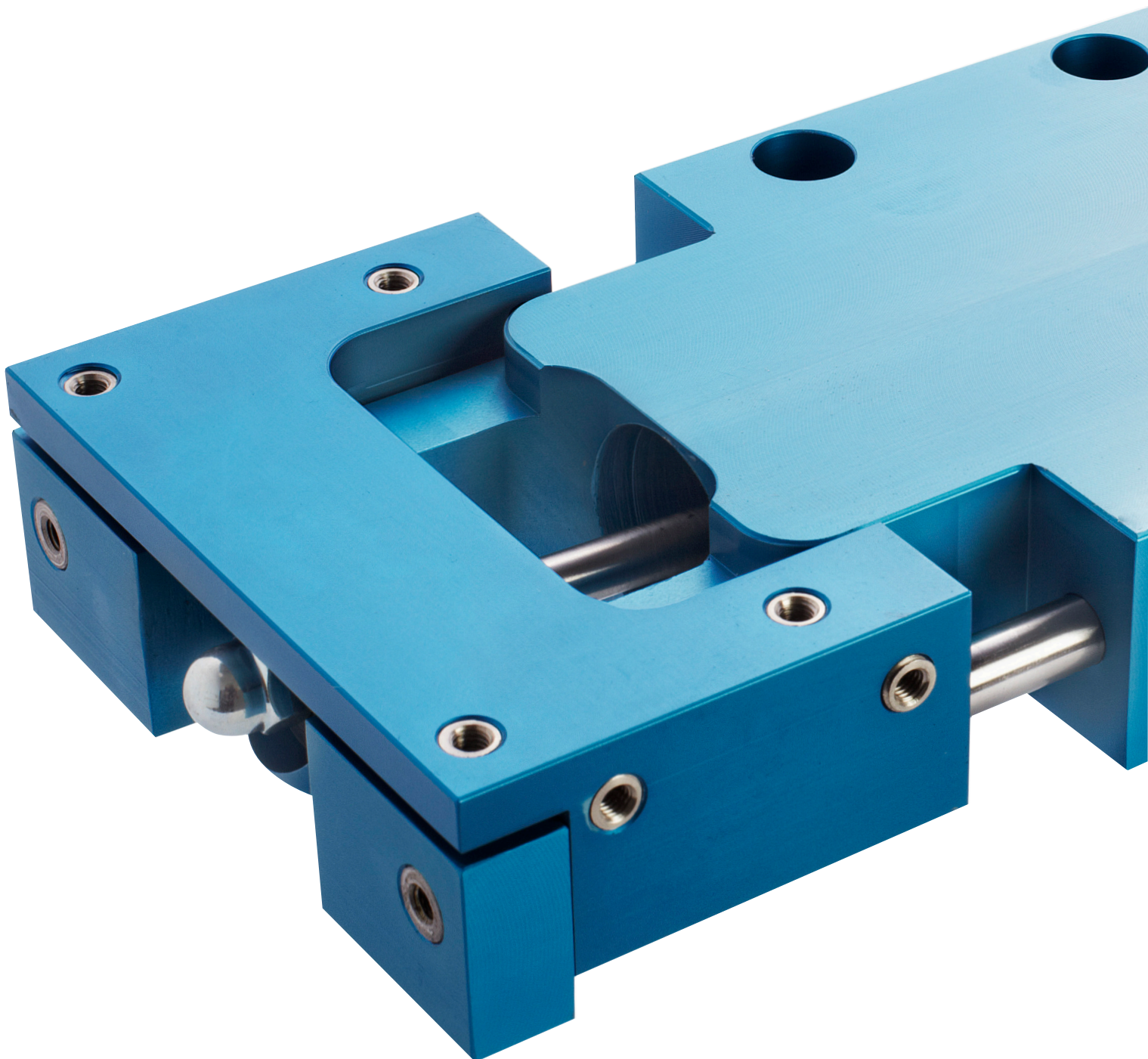




MECTOOL

MADE IN SWEDEN



FRICION TRANSPORTER TPE 15

INSTALLATION & SERVICE MANUAL

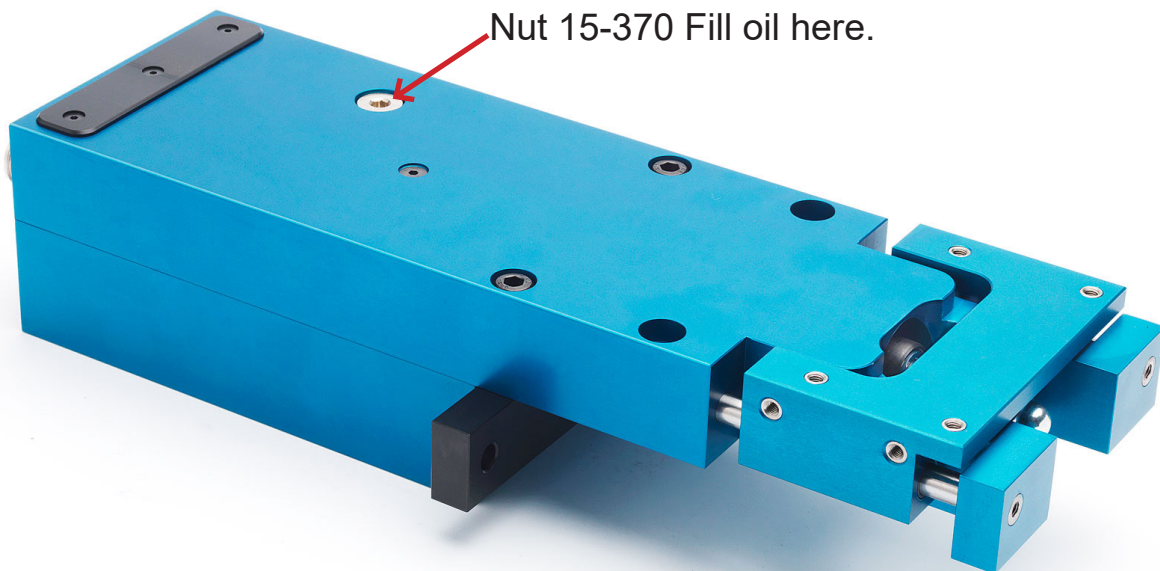


The TPE 15/19 must be filled with the supplied 250 ml lubricating oil before use. The oil is shipped in a separate container to avoid accidental leaking.

Remove nut 15-370 at the top of the Transporter, pour in the oil and re-attach the nut.

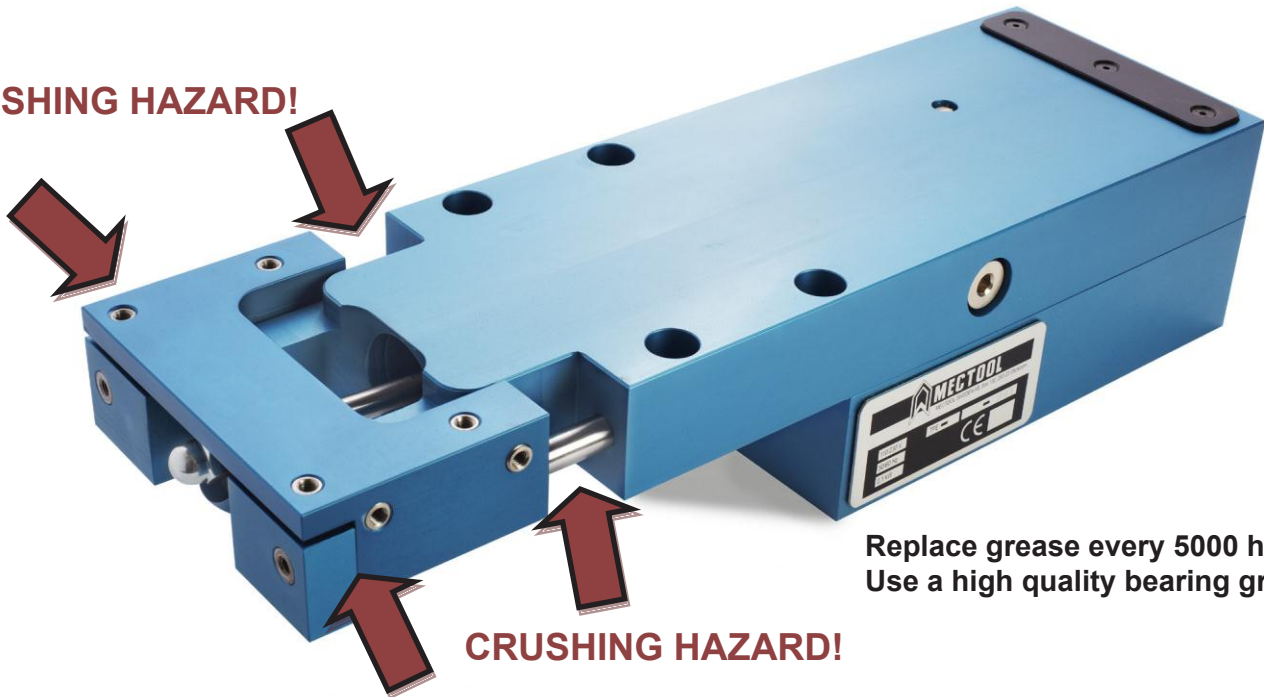
The Transporter is now ready for operation.

Replace the oil every 5,000 hours with a high quality lubricating oil.





CRUSHING HAZARD!



Replace grease every 5000 hours.
Use a high quality bearing grease.

CRUSHING HAZARD!

Installation instructions.

TPE 15/19 must be mounted horizontally, it may not be mounted on the side or pitched.

A custom tray or chute must be designed. We recommend aluminum or any light gauge material to reduce tray weight.

Maximum weight, tray only: 5 kg.
Transportation capacity: 15 kg.

Using metric screws, fasten tray or chute to the TPE 15/19 using all holes. The tray or chute must be supported at both ends to minimize vibration and deflection.

IMPORTANT!

TPE 15/19 must be mounted so no danger is provided for working personnel.

Do not attach the motor controller unit to the press. Vibrations will damage the controller and void all warranty.

Operating the TPE 15/19.

Connect the controller power cable to a power outlet (110 - 240 Volt AC, 50/60 Hz).

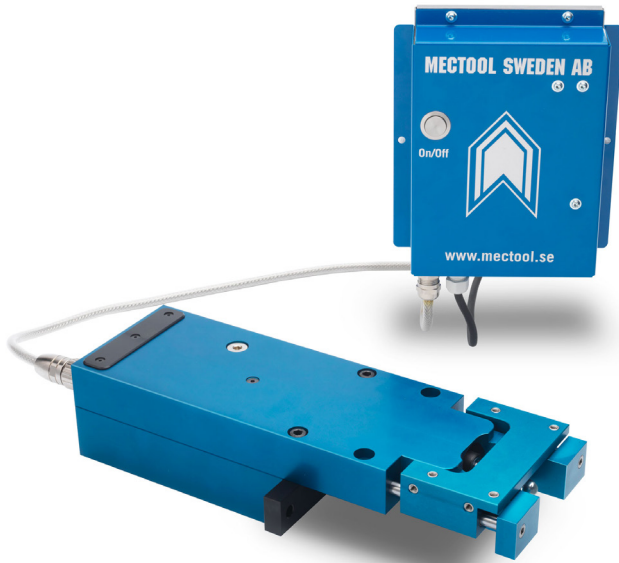
Do not change or replace the cable between the Transporter and the controller.

Make sure that the tray can move freely in both directions.

Push the power button on the controller, the TPE 15/19 will start after a few seconds.

If you want to restart the TPE 15/19 you must wait 5 seconds for the controller to be ready.

CRUSHING HAZARD!
(Indicated by red arrows in picture)



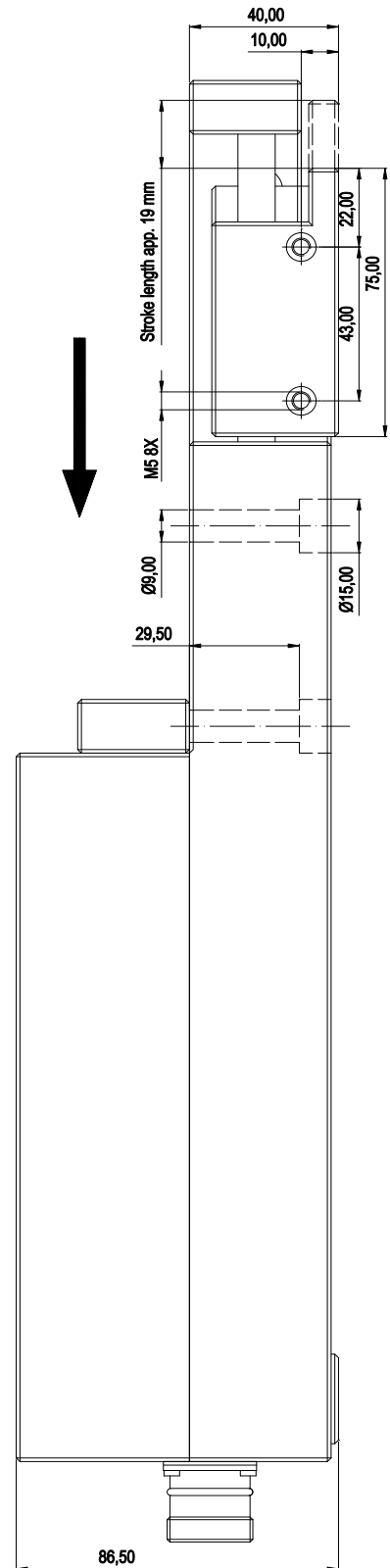
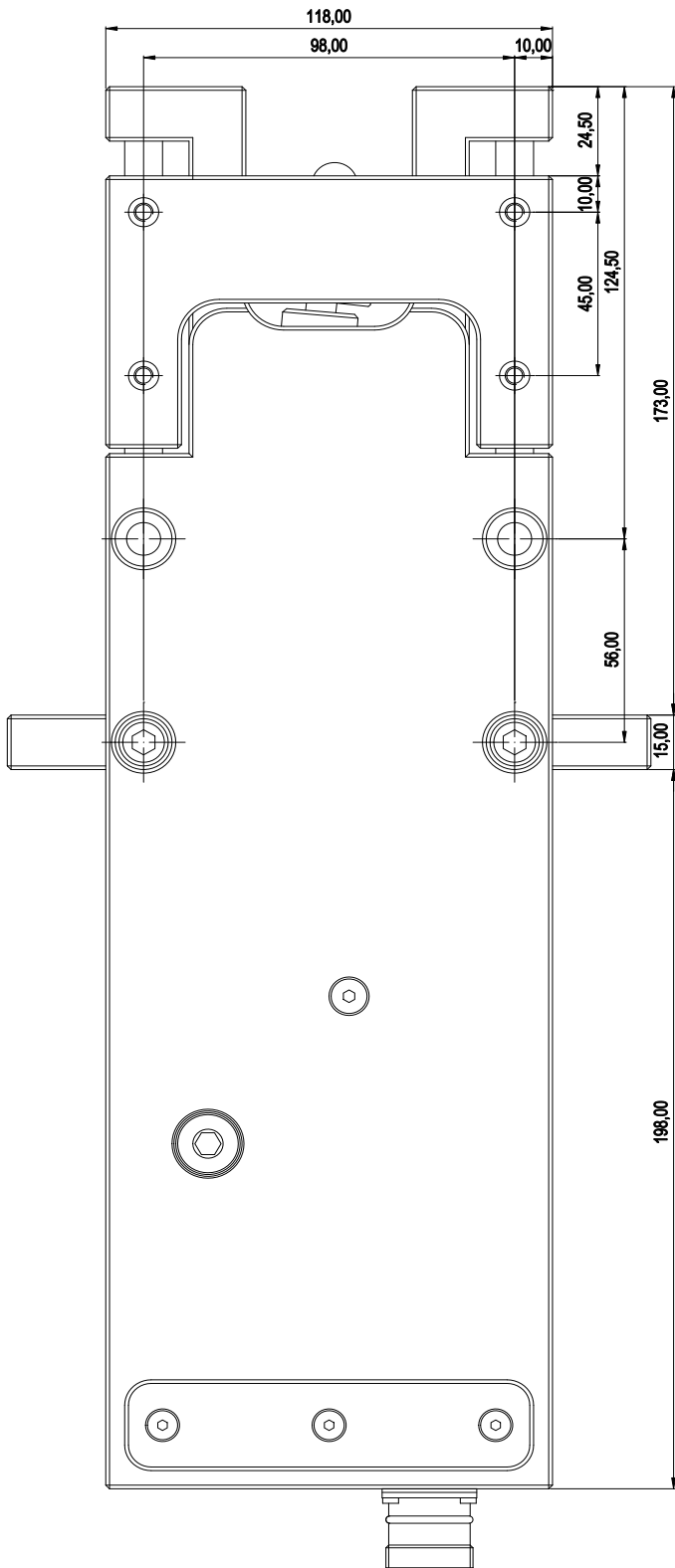
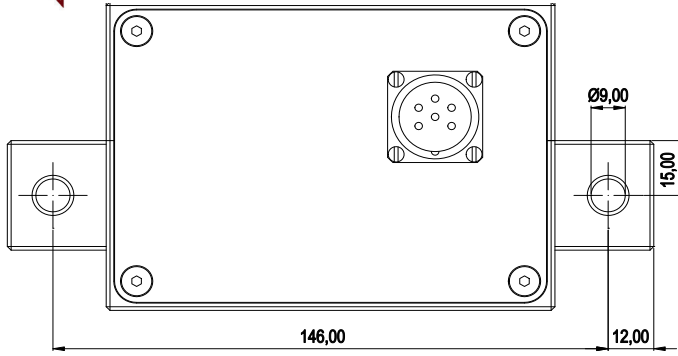
Please note that some parts may not be available because they are not field replaceable. If this is the case, a subassembly must be used. Some parts are only available as a subassembly and cannot be purchased individually. Check the spare parts reference lists for details.

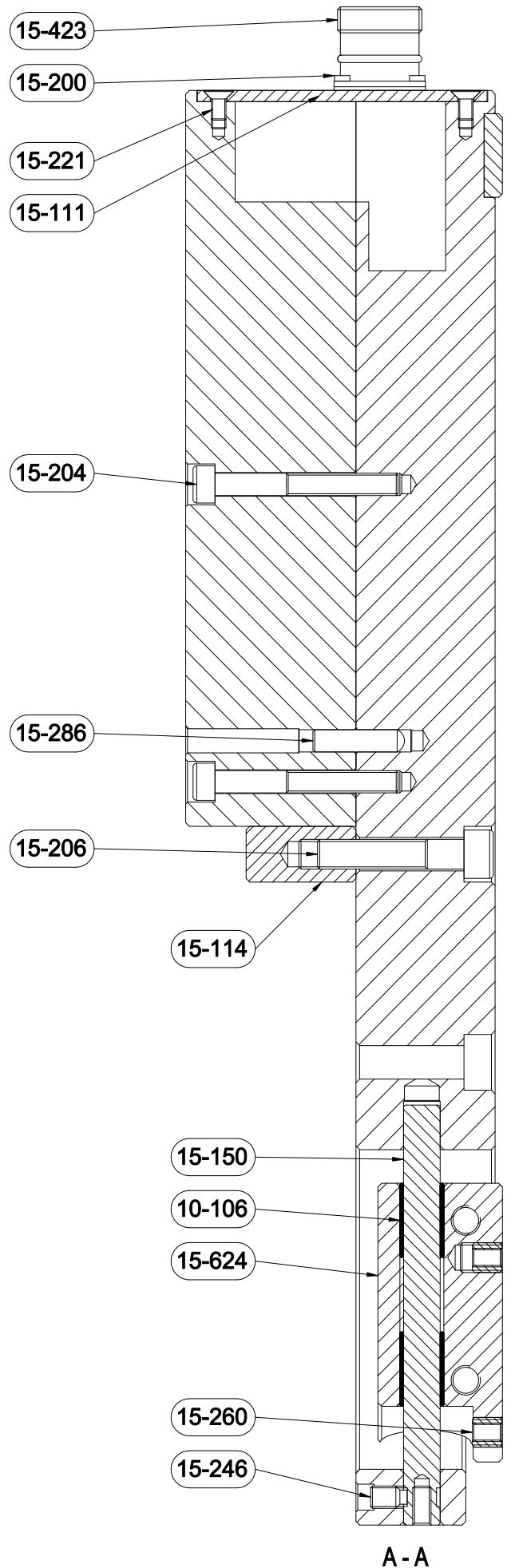
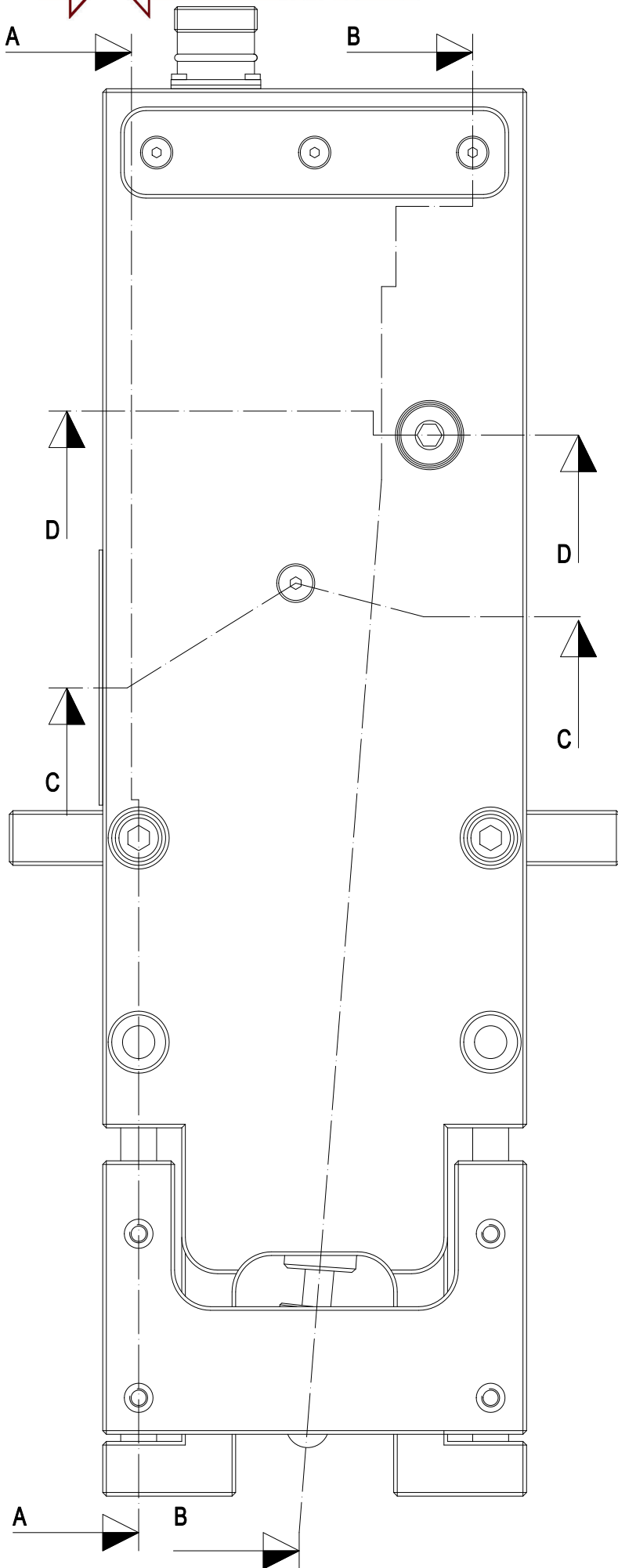
Disassembly.

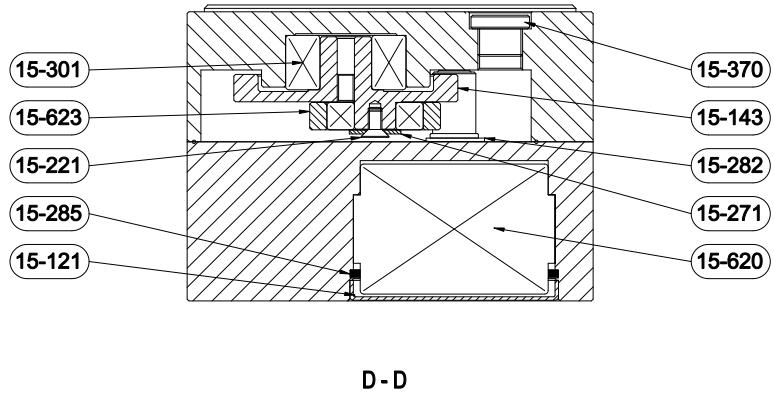
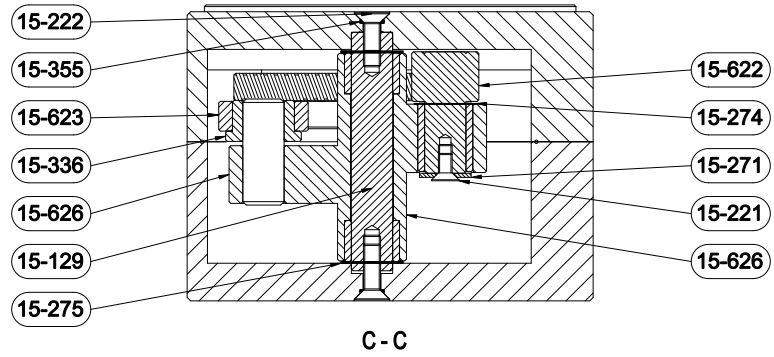
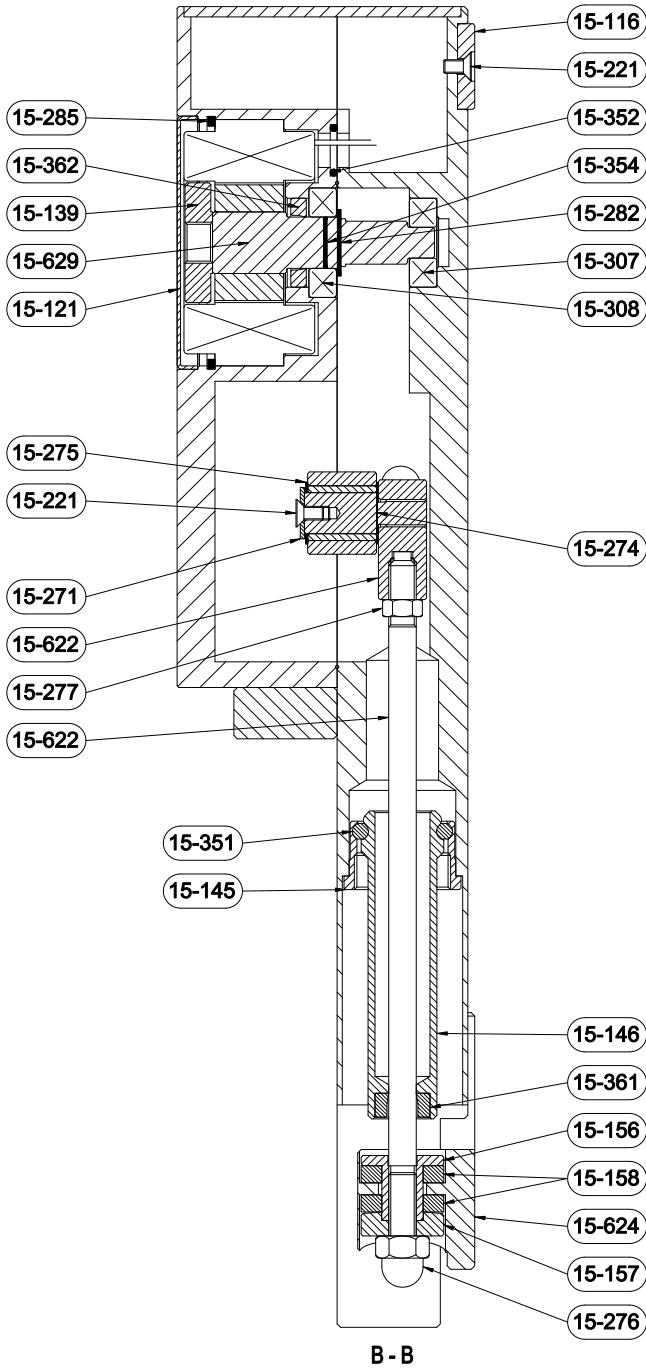
1. Disconnect the motor connection.
2. To remove motor cover 15-121, blow compressed air into the hole where the cables are located.
3. Move the slide frame 15-624 to its rear position.
4. Remove the dome nut 15-276.
5. Remove the threaded washer 15-157 while holding a screwdriver in the slot on the drawbar 15-148.
6. Remove urethane washer 15-158.
7. Remove guides 15-150 (2 pcs).
8. Remove the slide frame 15-624.
9. Remove cover 15-111 and disconnect the motor. Remove the plastic plug to the stator (requires special tools).
10. Turn the Transporter upside down.
11. Remove the screw 15-222.
12. Remove the guide pins 15-286 (2 pcs).
13. Remove the screws 15-204 (4 pcs).
14. Remove the motor bracket, the mechanism remains in the machine body.
15. Remove the nut 15-277.
16. Remove the drawbar 15-148.
17. Remove the rocker mechanism 15-626.
18. Remove the connecting rod 15-623.
19. Remove the gear 15-143 with a slide hammer.
20. Clean the Transporter.
21. Remove circlip 15-282 to remove the rotor.

Reassembly.

1. Grease all shafts, bearings and gears with high quality bearing grease.
2. Install the gear in the machine body.
3. Install the connecting rod on the gear with washer 15-271 and screw 15-221.
4. Put shim 15-274 0,2 mm on shaft 15-137 and install on rocker mechanism 15-626. Put shim 15-275 0,5 mm on the shaft and install screw 15-221 with washer 15-271 on the shaft's end.
5. Put shim 15-275 0,5 mm on shaft 15-129.
6. Install rocker mechanism with link on shaft 15-129.
7. Install drawbar 15-148 in the link, lock with nut 15-277.
8. Put shim 15-275 0,5 mm on shaft 15-129.
9. Install guide pins 15-286 in the machine body.
10. Install O-ring 15-352 in the indentation on the motor bracket.
11. Install the motor bracket on the guide pins in the machine body and fit the motor shaft's teeth with the gear, then tighten screws 15-204.
12. Install screw 15-222 with O-ring 15-355.
13. Assemble the slide frame in reverse order.







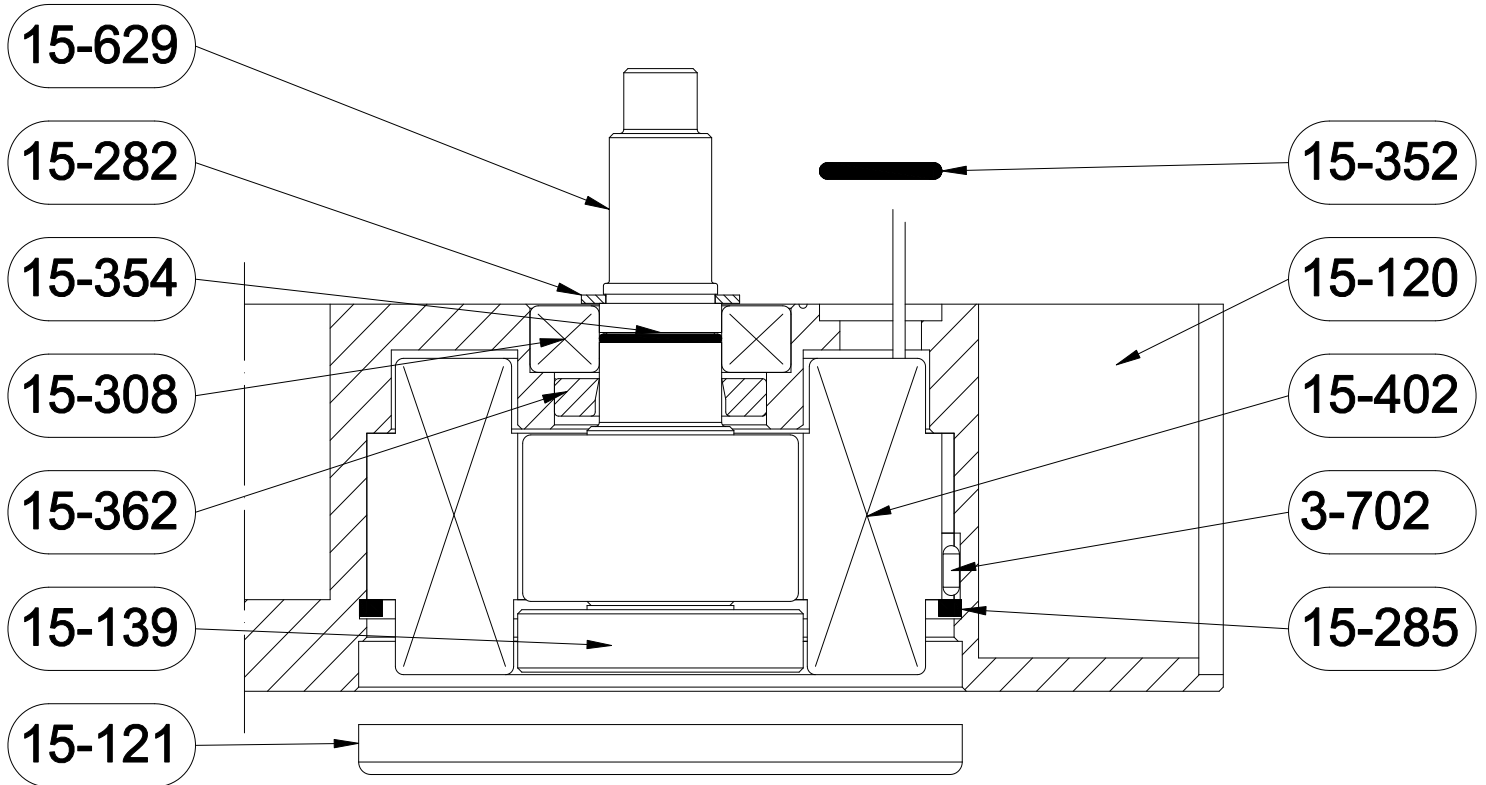


Part No.	Description	Qty
3-702	Pin	1
10-106	Composite bearing	4
15-111	Cover	1
15-114	Attachment	1
15-116	Slide block	1
15-121	Motor cover	1
15-129	Shaft	1
15-139	Fly wheel	1
15-143	Gear	1
15-145	Bushing	1
15-146	Sleeve	1
15-150	Guide	2
15-156	Nut	1
15-157	Threaded washer	1
15-158	Urethane washer	2
15-200	Screw	4
15-204	Screw	4
15-206	Screw	2
15-221	Screw	9
15-222	Screw	2
15-246	Screw	2
15-260	Threaded insert	8
15-271	Washer	2
15-274	Washer	1
15-275	Washer	3
15-276	Nut	1
15-277	Nut	1
15-282	Circlip	1

Part No.	Description	Qty
15-285	Locking ring	1
15-286	Guide pin	2
15-301	Bearing	1
10-307	Bearing	1
15-308	Bearing	1
15-336	Bushing	1
15-351	O-ring	1
15-352	O-ring	1
15-354	O-ring	1
15-355	O-ring	2
15-361	Radial shaft seal	1
15-362	Radial shaft seal	1
15-370	Plug	1
15-402	Stator	1
15-423	Socket	1

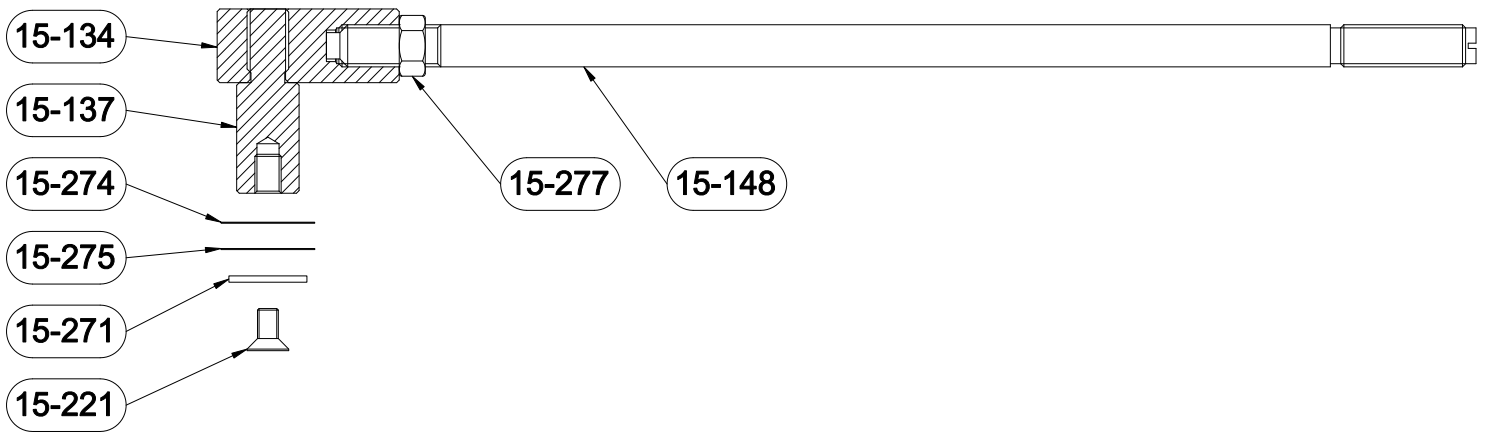
Subassemblies

Part No.	Description	Qty
15-611	Motor controller unit	1
15-615	Extension cable 3,5M	-
15-620	Motor	1
15-622	Drawbar	1
15-623	Connecting rod	1
15-624	Slide frame	1
15-626	Rocker	1
15-629	Motor shaft	1



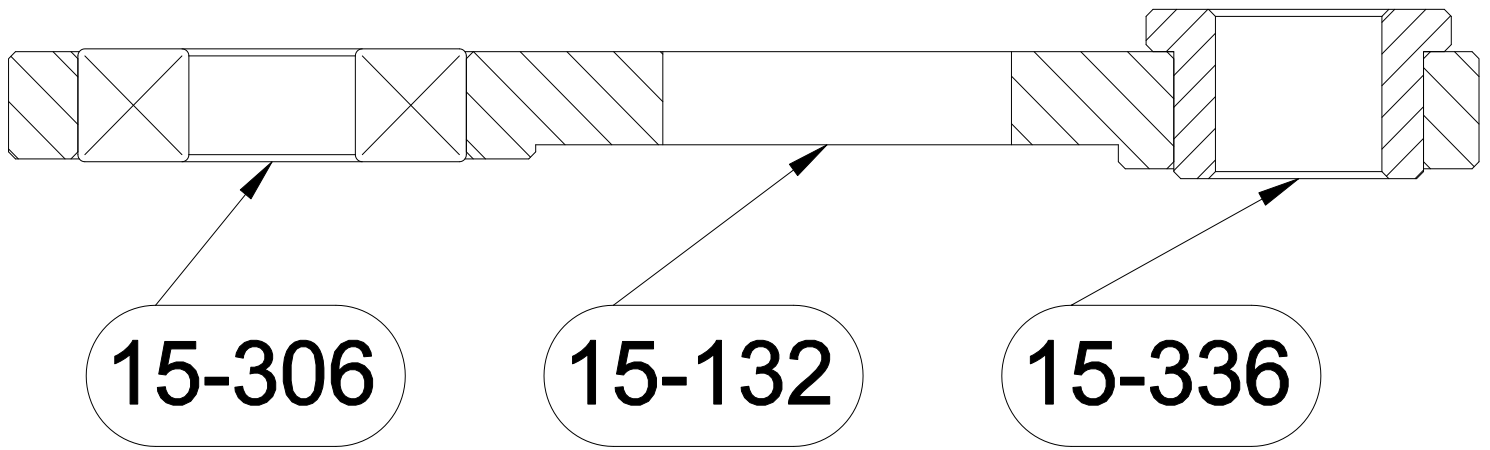
Part No.	Description	Qty
3-702	Pin	1
15-120	Motor housing *	1
15-121	Motor cover	1
15-139	Fly wheel	1
15-282	Circlip	1
15-285	Locking ring	1
* Not sold separately		

Part No.	Description	Qty
15-308	Bearing	1
15-352	O-ring	1
15-354	O-ring	1
15-362	Radial shaft seal	1
15-402	Stator *	1
15-629	Motor shaft	1



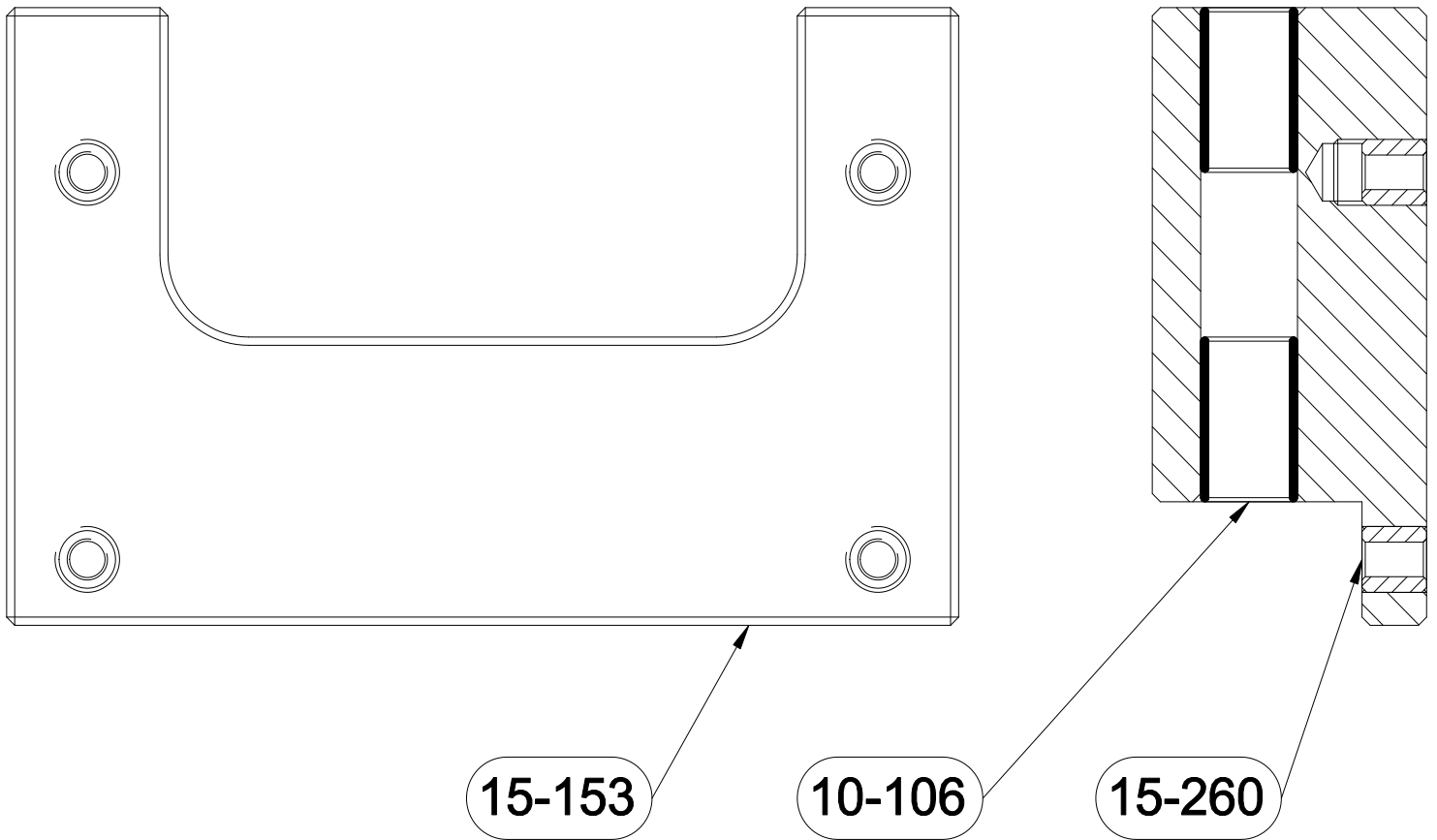
Part No.	Description	Qty
15-134	Link *	1
15-137	Shaft *	1
15-148	Rod *	1
15-221	Screw	1
* Not sold separately		

Part No.	Description	Qty
15-271	Washer	1
15-274	Washer	1
15-275	Washer	1



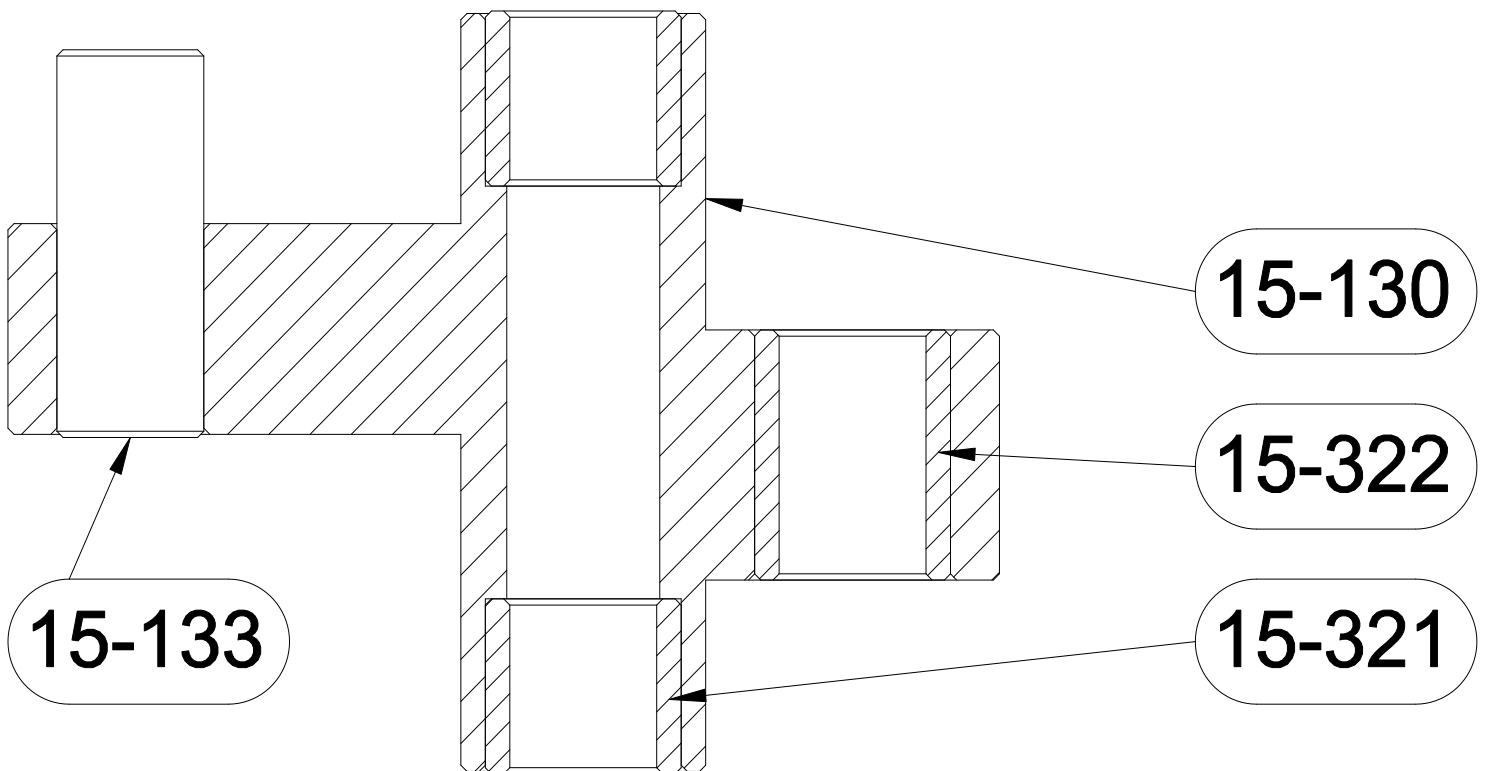
Part No.	Description	Qty
15-132	Connecting rod *	1
15-306	Bearing *	1
* Not sold separately		

Part No.	Description	Qty
15-336	Bushing	1



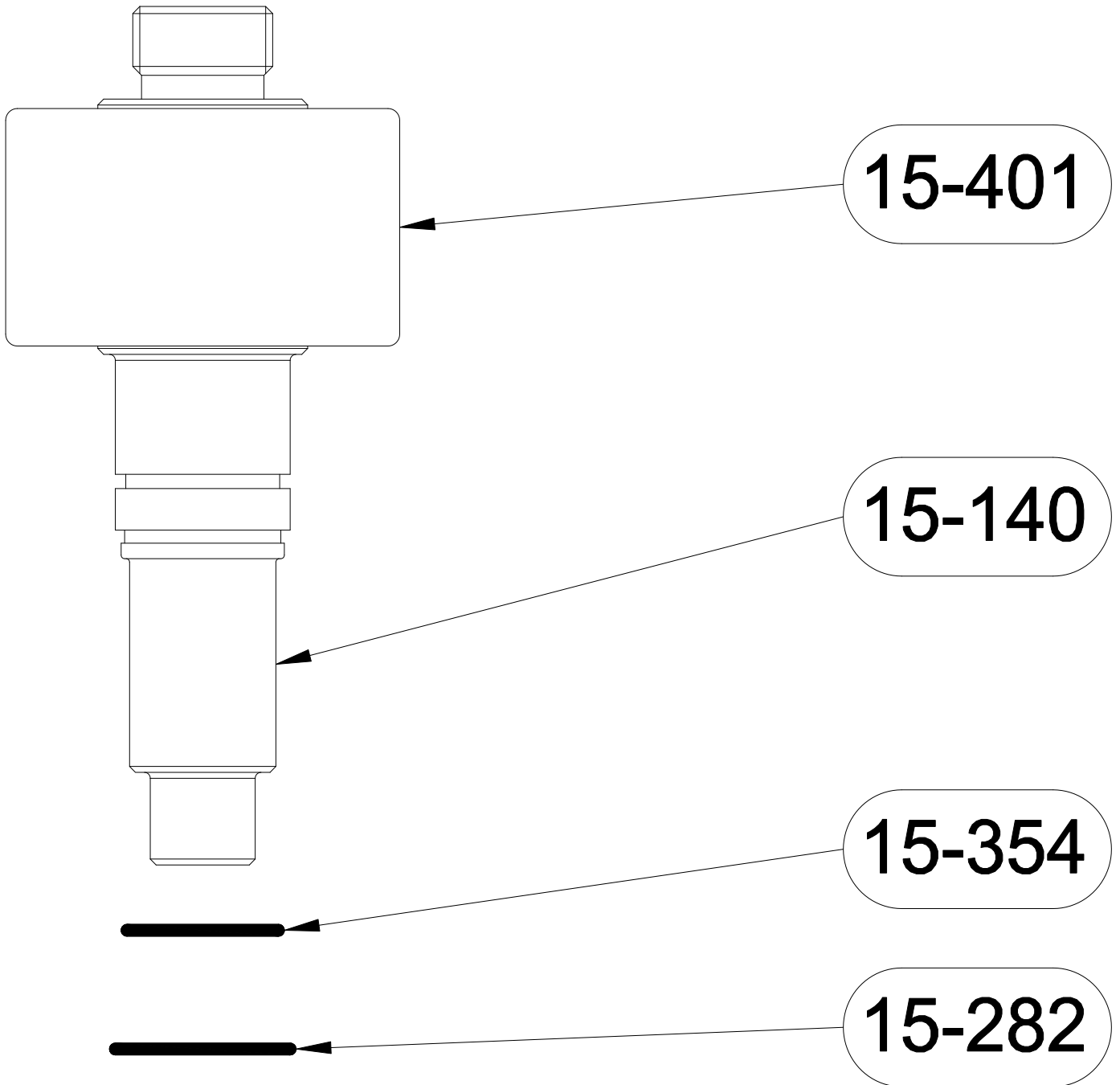
Part No.	Description	Qty
10-106	Composite bearing	4
15-153	Slide frame *	1
* Not sold separately		

Part No.	Description	Qty
15-260	Threaded insert	8



Part No.	Description	Qty
15-130	Rocker *	1
15-133	Shaft *	1
* Not sold separately		

Part No.	Description	Qty
15-321	Bushing *	2
15-322	Bushing *	1



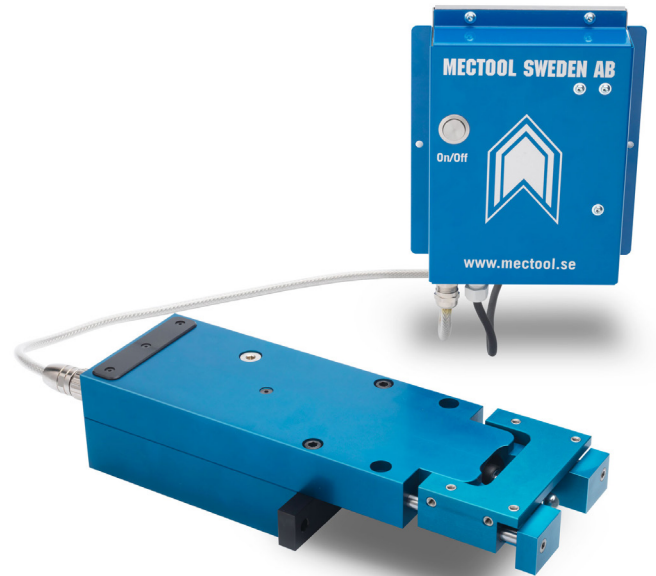
Part No.	Description	Qty
15-140	Shaft *	1
15-282	Circlip	1
* Not sold separately		

Part No.	Description	Qty
15-354	O-ring	1
15-401	Rotor *	1



TPE 15/19

Max load capacity	15 kg
Max tray weight	5 kg
Stroke length	19 mm
Feed rate	4 - 8 m/min
Sound level	55 dB (A)
Motor effect	0,1 kw
Electrical connection	110 - 240 V



TPE 100

Max load capacity	100 kg
Max tray weight	35 kg
Stroke length	16 mm
Feed rate	4 m/min
Sound level	62 dB (A)
Motor effect	0,5 kw
Electrical connection	380-415 V 50-60 Hz optional 110-120 V





Factory repair service.

If your Transporter requires repair, return it to our Service Center. A technician will examine your Transporter and get back to you with a quote of estimated costs.

Repairs include fault tracing and repair or replacement of failed components, as well as final testing to ensure your Transporter is functioning according to specifications.

All items with the warranty period are evaluated by technicians to verify warranty eligibility.

All Transporters repaired by Mectool receive a new three month manufacturer's warranty period (wear parts excluded).

Mectool Sweden AB
P.J. Rösjös Väg 121-3
293 40 Olofström
SWEDEN

Phone:
Email:
Website:

+46 454 30 90 40
info@mectool.se
www.mectool.se



EC DECLARATION OF CONFORMITY FOR MACHINERY

Original

Directive 2006/42/EC, Annex II 1A

Manufacturer (and where appropriate his authorised representative):

Company: Mectool Sweden AB
Address: Box 132, 293 23 Olofström

Hereby declares that:

Type of machinery: Friktionstransportör
No. of machinery: TP-3, TP-10, TP-40, TP-70, TP-140, TPE-15, TPE-100

Complies with the requirements of Machinery Directive 2006/42/EC.

Complies also with applicable requirements of the following EC directives:

2014/30/EU, EMC (elektromagnetisk kompatibilitet)

The following harmonized standards have been applied:

SS-EN ISO 12100 (Maskinsäkerhet, allmänna konstruktionsprinciper - Riskbedömning och riskreducering)
SS-EN 13857 (Skyddsavstånd)
SS-EN 60204-1 (Maskiners el-utrustning)

The following other standards and specifications have been applied:

Authorized to compile the technical file:

Name: Kenneth Brodin
Address: Mectool Sweden AB, Box 132, 293 23 Olofström

Signature:

Place and date:

Olofström 2021-01-12

Signature:



Name: Kenneth Brodin

Position: VD